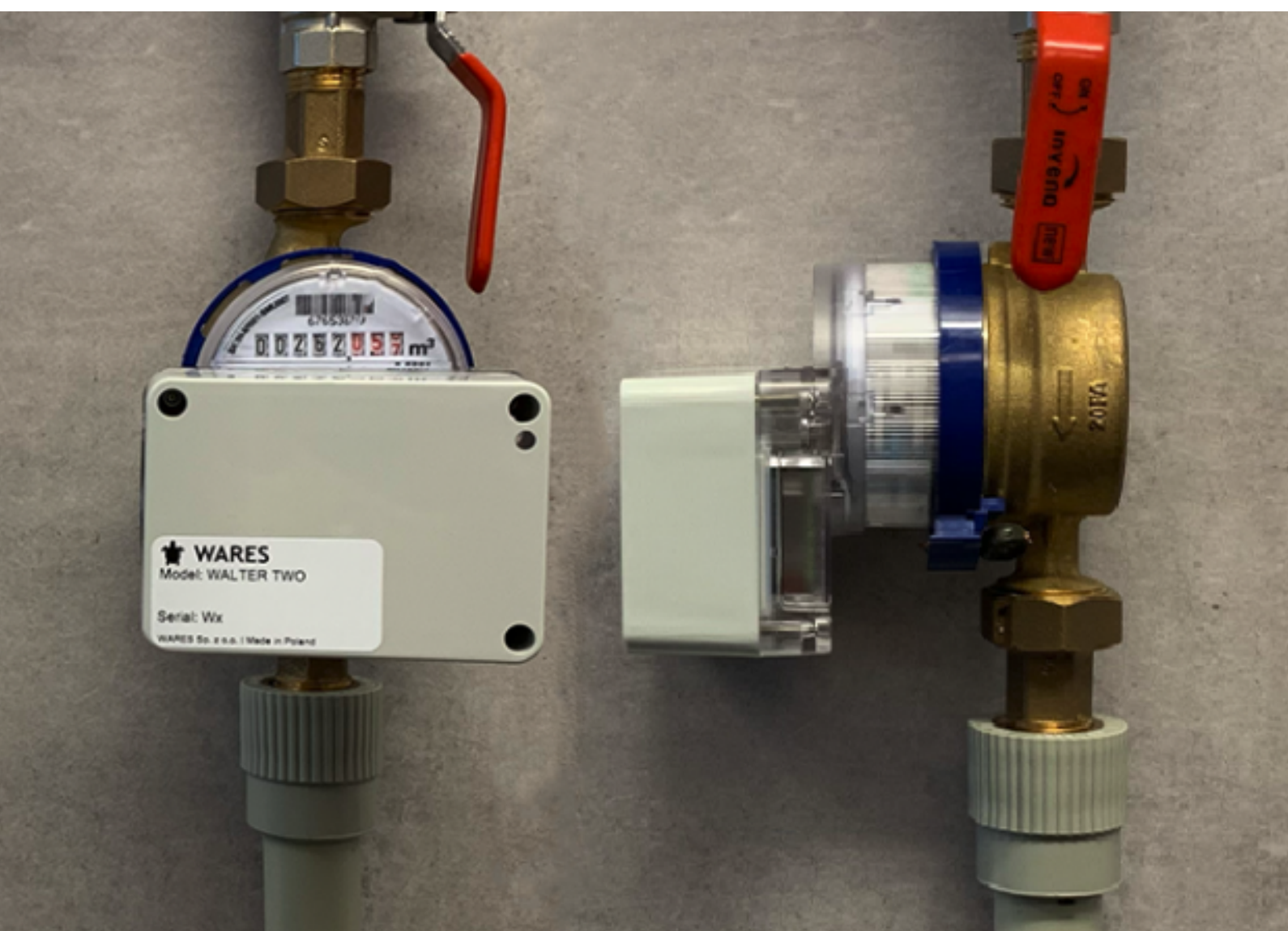


Technical data

Walter TWO

Remote reading of water meters



Info

WALTER TWO is a radio module designed for reading water meter indications. The reading is carried out using an optical and magnetic sensor. The device has a built-in modem with an e-sim card. Communication is carried out using the LPWAN network (NB IOT, LTE CAT M1).

Application

The cover is designed for mounting on single-jet and volumetric water meters of any water meter manufacturer.

Functions

The device allows you to read the data generated by the water meter

- hourly water consumption reading
- sending data in the form of a daily report every 24 hours
- real-time transmission of generated alarms

Daily report

This is the file sent to the database. The file contains

- water meter number
- reader number
- date and time of the report
- state in liters at 00:00
- water consumption every hour
- the volume of backflow in liters per day
- number of continuous flows
- number of alarms sent
- battery voltage status

Alarms

It is a report sent immediately after an event occurs or in a daily report. The file contains

- date and time of the event
- event type
- value

The type of the event	Designation	Situation description
Device reset	Alarm 0	Restarting the software
Device clock discrepancy	Alarm 1	Time discrepancy with system time
Continuous flow	Alarm 2	Flow parameter reached
Disassembly of the device	Alarm 3	Dismantling the device from the water meter
Applying a magnet	Alarm 4	Applying a magnet
Temperature less than 2 degrees	Alarm 5	Temperature drop below 2 degrees

Technical data

Mounting method	Directly on the water meter
Warranty	24 months
Purpose	Reading the water meter indications
Casing	ABS
Tightness class	IP 68
Height	53,42 mm
Width	89,01 mm
Length	90,87 mm
Height above the water meter	45,65 mm
Weight	0,2 kg
Power	1 x 3.6V battery
Battery life	up to 12 years*
Reading	every 1 h
Certificate	CE, ROHS
Radio parameters	
Communication	LPWAN networks (NB IOT, LTE CAT M1)
Transmission Type	bidirectional
Frequency	700, 800, 900 MHz
Range	20 km

* depending on configuration

The place of installation of the overlay

The cover plate should be installed on water meters according to their model and type. The installation site must not be exposed to a strong light beam. The water meter optical pulser should be clean and free from water vapor.

Technical drawing of the overlay

